



# Autoscope® Solo Terra™

Featuring a camera with integrated machine vision processor, the Autoscope Solo® Terra™ video detection system is the perfect choice for junction, roadway and bridge applications. Autoscope delivers high performance vehicle detection for junction control, traffic data collection and incident detection.

With innovative Terra Technology you will appreciate the processing power, web browser communications, streaming digital video and ease of setup and use. EasyLink™ broadband connectivity provides simple connection to your traffic system communications network. Also, you will save significant installation and cabling costs due to “3-wires-only” cabling and no coax.

From stop bar detection to stopped vehicle detection, the Autoscope Solo Terra is a cost effective detection solution for transportation control and management.

## APPLICATIONS

- > Junction control
- > Traffic incident management
  - Highways
  - Tunnels
  - Bridges
- > Traffic data collection and analysis
- > Work zone safety and traffic control
- > Traveler information systems
- > Journey time (travel time)
- > Remote video surveillance

## FEATURES

- > Vehicle detection, traffic data measurement and incident detection
- > Integrated colour camera, zoom lens, and machine vision processor in one compact unit ensures high quality video for processing
- > Dual-core processor for advanced image processing
- > MPEG-4 digital streaming video output
- > EasyLink broadband communications
- > View video from remote locations using Internet browser
- > IP addressable
- > ClearVision™ hydrophilic coating and faceplate heater

## BENEFITS

- > Cost-effective solutions for traffic management
- > Field-proven accuracy and reliability
- > Easy to install and configure
- > Flexible design meets a variety of detection objectives
- > Superior value and performance compared to other detector systems

## SPECIFICATIONS

### Power

- > 15W
- > 85 to 265 VAC, 50 to 60 Hz

### Video

- > Digital streaming MPEG-4 video output

### Lens

- > 22X, Continuous focus lens
- > Standard configuration:
  - Horizontal: 2.3 to 48.0 degrees
  - Vertical: 1.8 to 37.0 degrees
  - Focal Length 4.1mm to 87.8mm

### Camera

- > 1/4" CCD
- > Horizontal resolution: 470 TVL
- > Sensitivity (at lens, full video, AGC off, 1/60 sec) 2.0 lux (colour)
- > Signal-to-noise > 50 dB
- > Synchronization: crystal lock

### Housing and Sunshield

- > Image sensor and processing board sealed in a waterproof and dust-tight NEMA-4 housing (IP 66)
- > ClearVision™ faceplate for low maintenance
  - Hydrophilic faceplate coating
  - Low power thermostatically-controlled ITO faceplate heater
- > Adjustable ClearVision sun and weather shield with drip guard
- > EasyLock™ weather-proof IDC power connector on backplate
- > Mounting: standard camera bracket tilt-top provided

### Communications

EasyLink Ethernet 10/100 Mb/s communication via RJ-45 connector on Terra Interface Panel

### Environmental

- > -34° C to +60° C (-29° F to +140° F)
- > Up to 100% relative humidity per MIL-E-5400T paragraph 4.3.24.4

### Dimensions and Weight

- > H x W x L (with sunshield and bracket)
  - 149 mm x 108 mm x 505 mm
  - (5.9 in x 4.3 in x 19.9 in)
- > 2.27 kg (5 lb)

### Optional Wide Angle Zoom Lens

- > Wide-angle configuration:
  - Horizontal: 4.0 to 74.0 degrees
  - Vertical: 3.0 to 59.0 degrees
  - Focal Length: 2.4mm to 52.8mm
- > Wide-angle dimensions and weight
  - 203 mm x 120 mm x 540 mm
  - (8.0 in x 4.7 in x 21.3 in)
  - 3.0 kg (6.6 lb)

### Warranty

- > Two-year warranty
- > Extended warranty package available

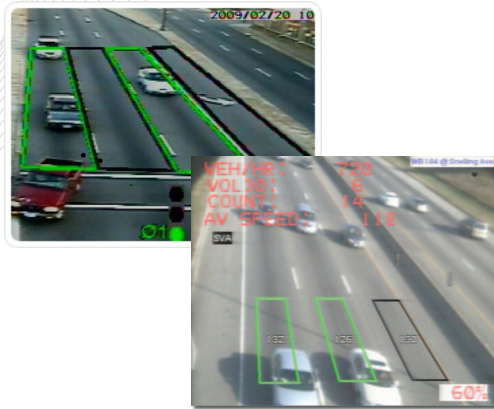
### Regulatory

- > CE EN 55022, EN 61000-6-1, EN 60950
- > FCC Part 15, Class A

## SETUP AND OPERATION

The Autoscope Solo Terra unit is easier than ever to set up and customize to meet your requirements.

- > You can assign detector outputs to detector interface cards that are compatible with all existing traffic control equipment. Simple mouse and keyboard commands create detection zones for:
  - Tunnels
  - Highways
  - Bridges
  - Junction control
- > Real-time or stored traffic data includes:
  - Volume
  - Occupancy
  - Speed
  - Classification
- > Incident alarms can be assigned to discrete detector outputs or transmitted directly to a traffic incident management system. Incidents detected include:
  - Stopped vehicles
  - Wrong way vehicles
  - Slow moving vehicles
  - Pedestrian
  - Debris
  - Smoke/fire
- > You can quickly integrate traffic data into your own application using the optional Autoscope Software Developer's Kit (SDK).



### Image Sensing Systems, Inc. Headquarters

500 Spruce Tree Centre  
1600 University Avenue West  
St. Paul, Minnesota 55104-3825 USA

Phone +1.651.603.7700  
Fax +1.651.305.6402  
stpaul@imagesensing.com  
imagesensing.com

### Image Sensing Systems Europe Limited

Xenus House  
Sandpiper Court  
Phoenix Park  
Eaton Socon, Cambridgeshire  
PE19 8EP United Kingdom

Phone +44.1480.477584  
Fax +44.1480.477589  
enquiries@imagesensingeu.com  
imagesensing.eu

### Flow Traffic Limited

Suite 01, 18th Floor, Queen's Place  
74 Queen's Road Central  
Hong Kong

Phone +852.2827.1123  
Fax +852.2827.0056  
hongkong@flowtraffic.com  
flowtraffic.com.cn